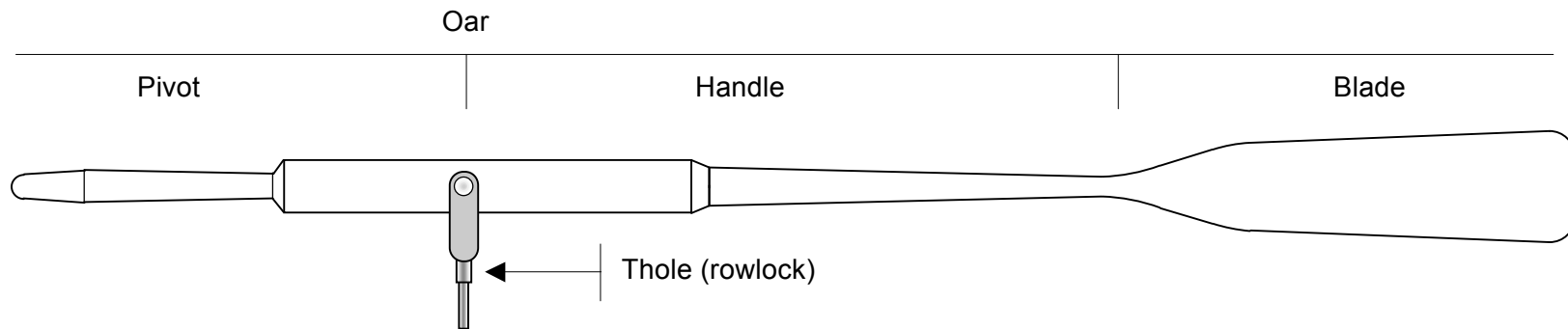


SHORT REVIEW OF CUTS AND SECTIONS

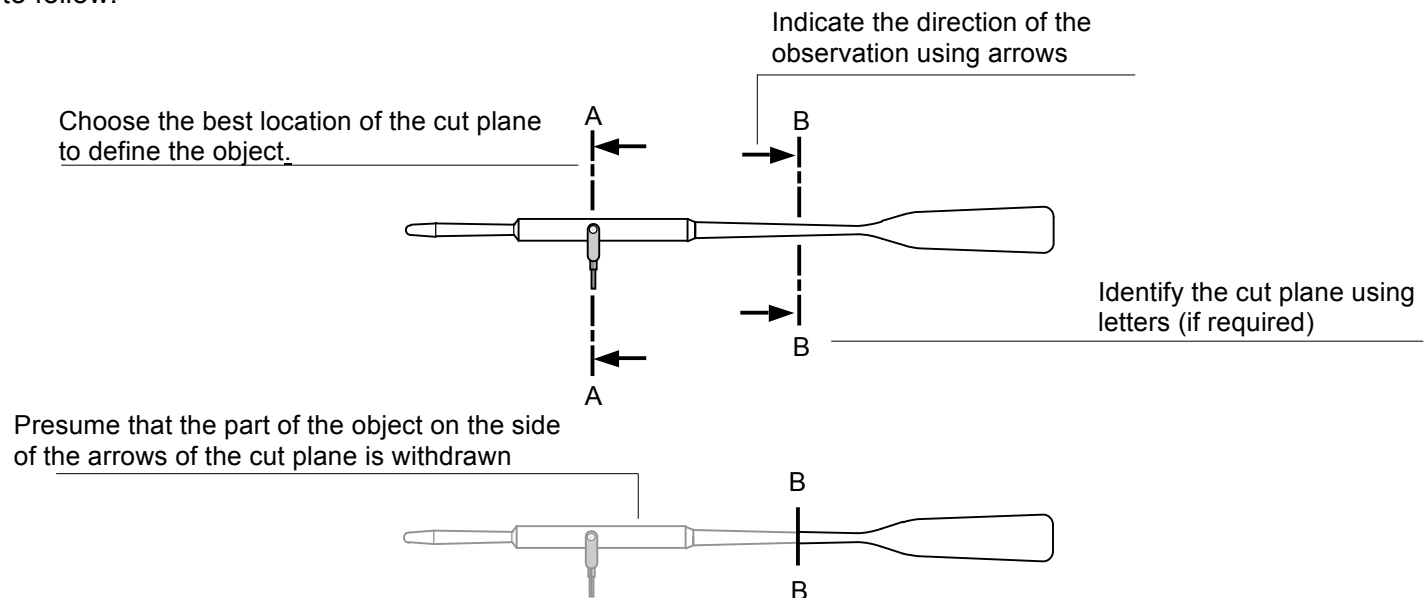
The objective of having a cut or section is to make the interpretation of a drawing easier. They allow you to see:

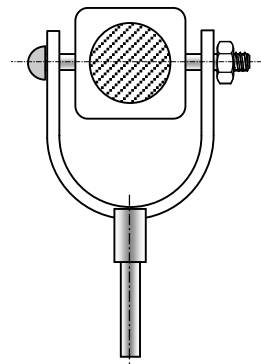
- inside an object;
- the thickness of the materials;
- the particular shapes.

Here are some examples of cuts and sections of a simple object, an oar.

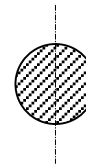


Steps to follow:





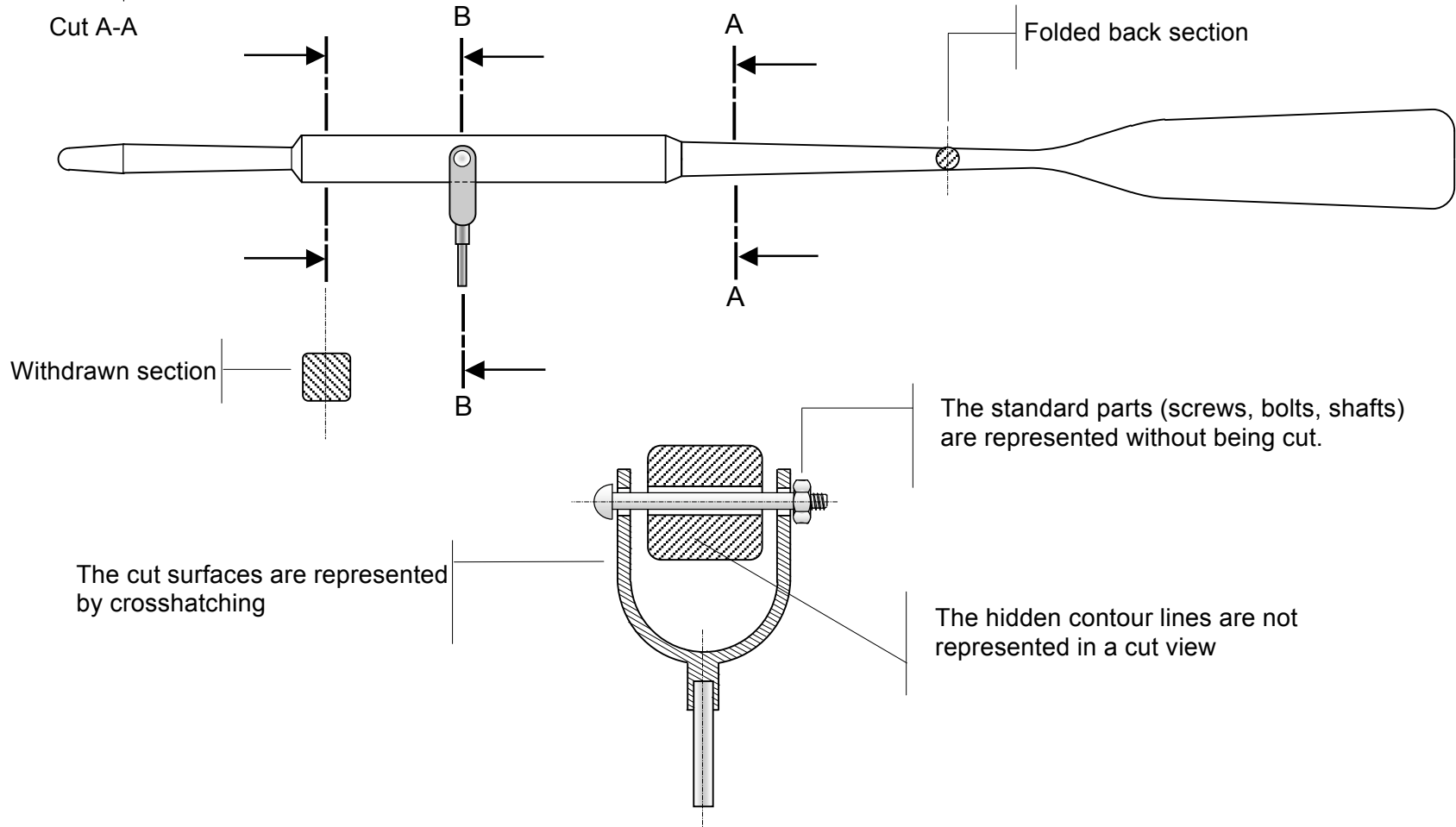
The view is a cut if it represents the cut part and the part of the object behind the cut plane.



The view is a section if it only represents the part located on the cut plane.

Section A-A

Cut A-A



Withdrawn section

Folded back section

The standard parts (screws, bolts, shafts) are represented without being cut.

The cut surfaces are represented by crosshatching

The hidden contour lines are not represented in a cut view

Cut B-B