



**centre de
développement
pédagogique**
*pour la formation générale
en science et technologie*

TECHNICAL FILE

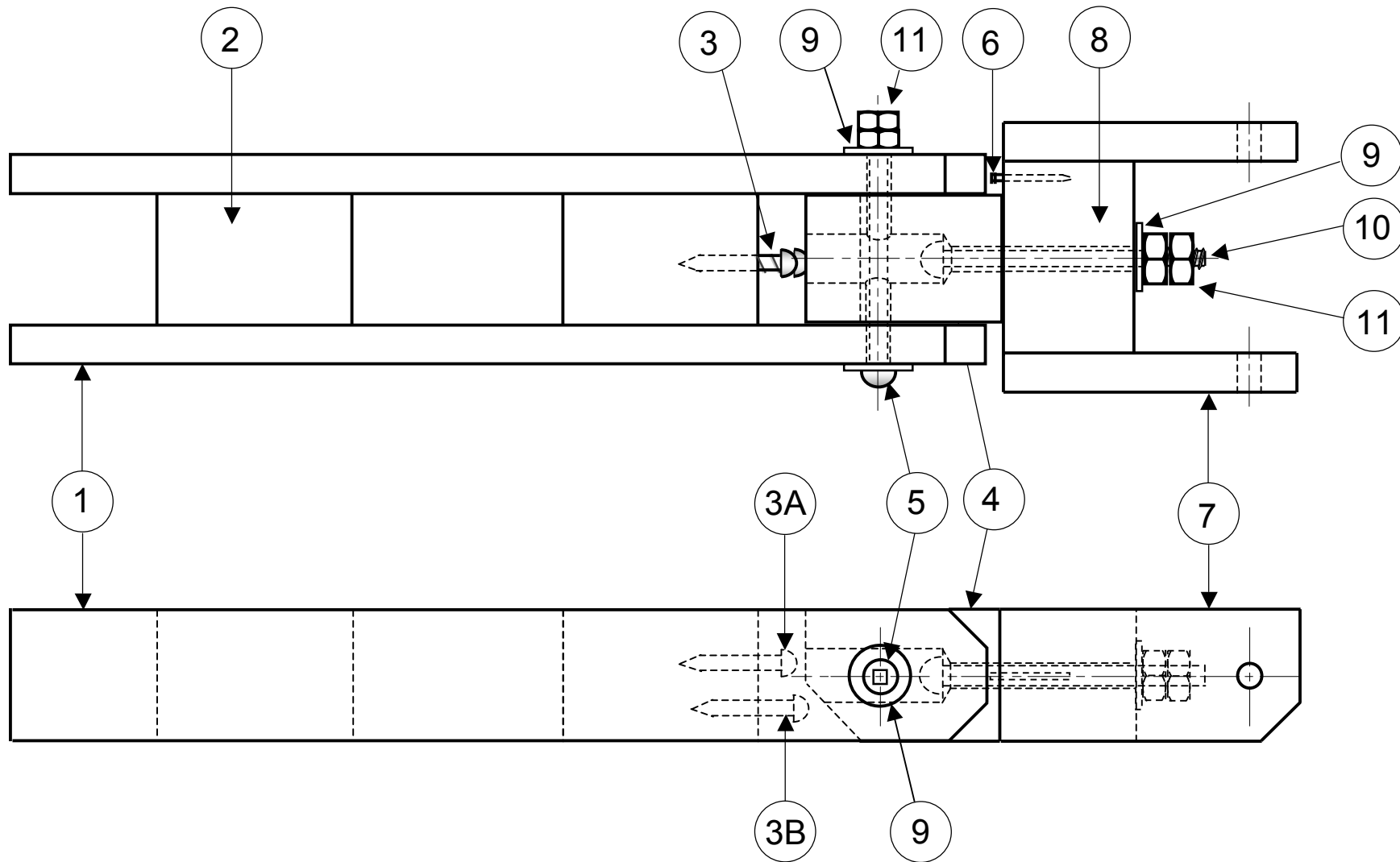
BESTARM Engineering Firm



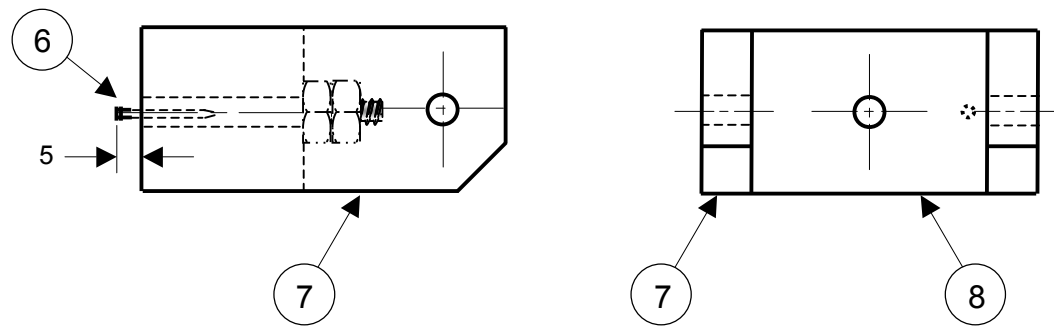
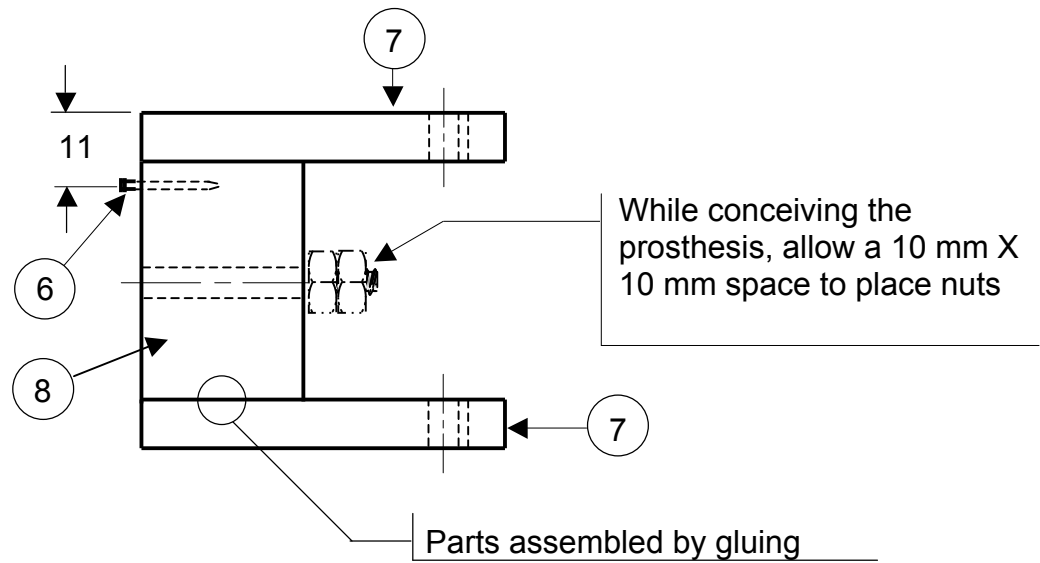
Contract 2007-145

September 2007

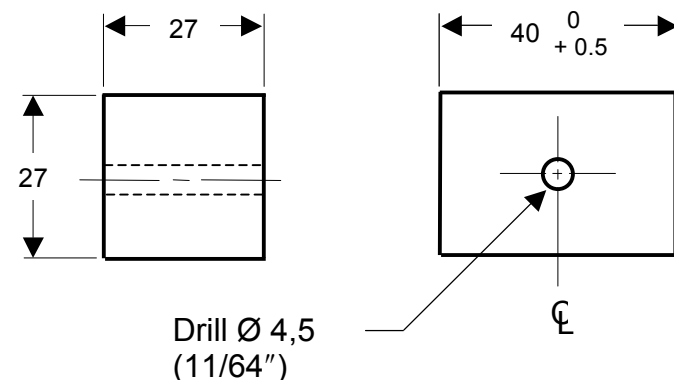
Working Document



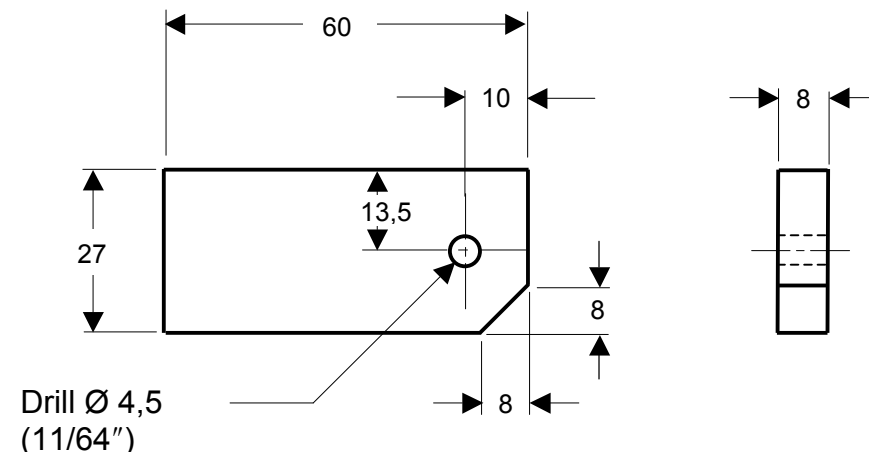
LOC	No.	DESIGNATION
11	4	BOLT
10	1	FORK AXLE
9	3	WASHER
8	1	BASE OF FORK
7	2	FORK ARM
6	1	FORK BUTT
5	2	FRAME AXLE
4	1	LINKING BLOCK
3	2	FRAME BUTT
2	2	CROSSBAR
1	2	FRAME BEAM



SUB-ASSEMBLY DRAWING (FORK)

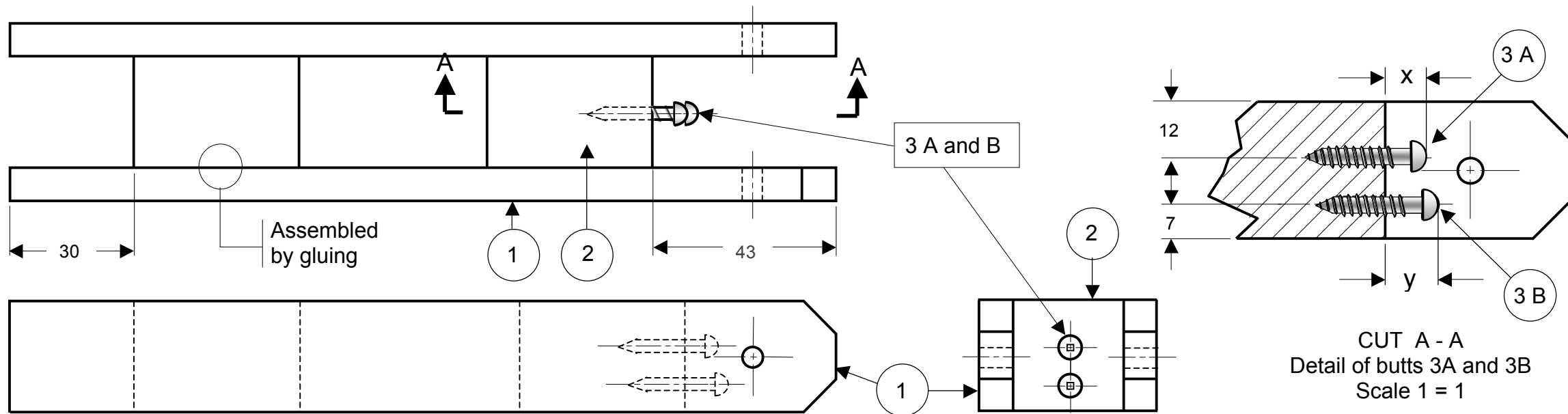


8 - DETAILED DRAWING OF BASE OF FORK

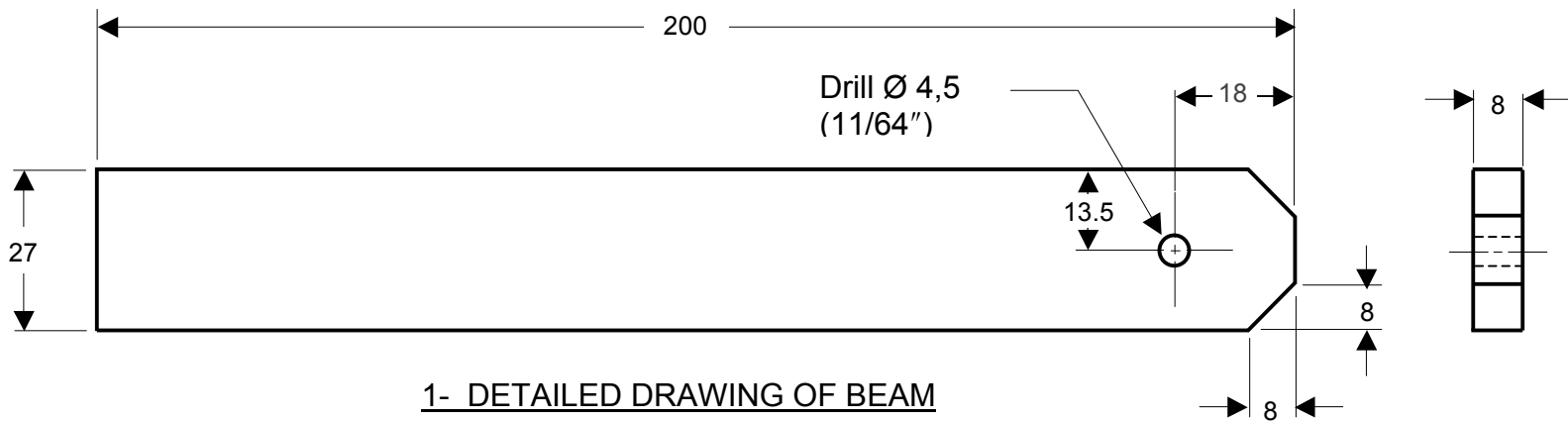


7 - DETAILED DRAWING OF FORK ARM

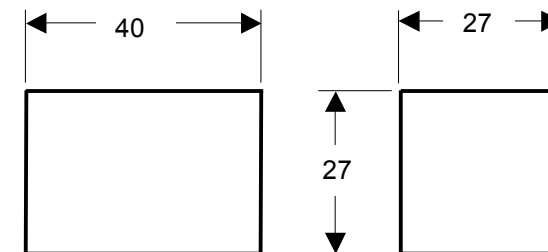
LOC	No.	DESIGNATION	MATERIALS	OBSERVATION
8	1	Base of fork	Pine slat	27 X 8 X 60
7	2	Fork arm	Pine rod	27 X 27 X 40
6	1	Fork butt	Finishing nail	20 mm



SUB-ASSEMBLY DRAWING (FRAME)

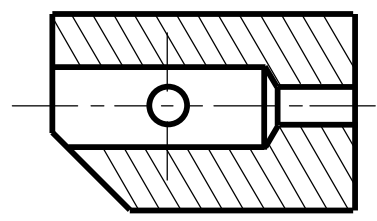
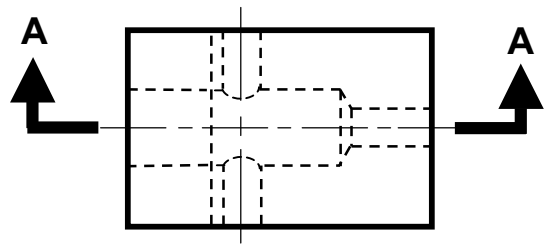


1- DETAILED DRAWING OF BEAM

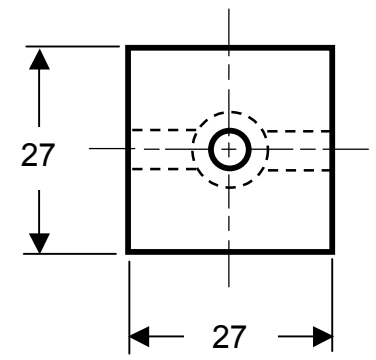
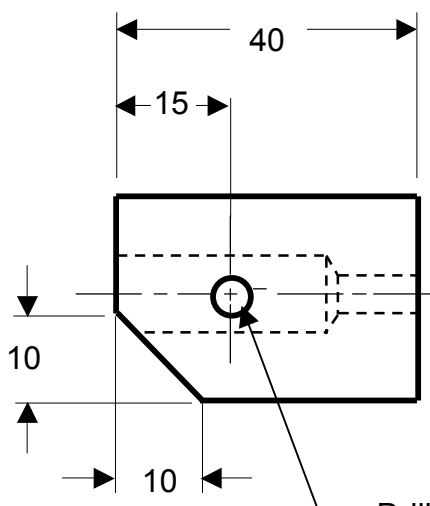
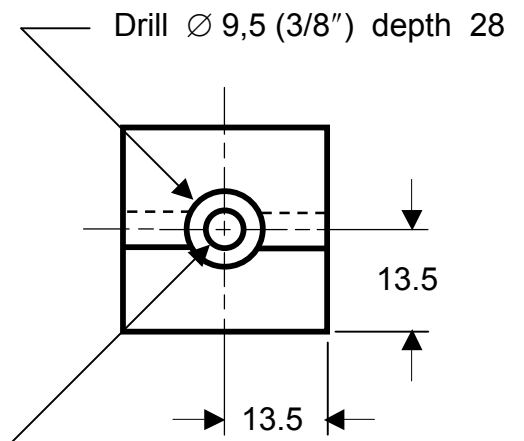


2- DETAILED DRAWING OF CROSSBAR

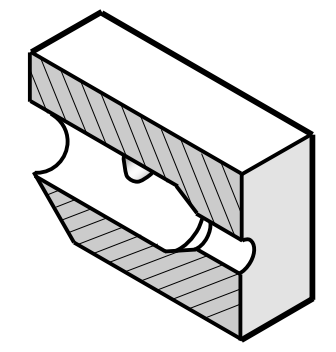
LOC	No.	DESIGNATION	MATERIALS	OBSERVATION
3 A-B	2	BUTT	Wood screw	Screw no 6 X ¾
2	2	PINE CROSSBAR	Square pine rod	27 X 27 X 40
1	2	FRAME BEAM	Pine slat	27 X 8 X 200



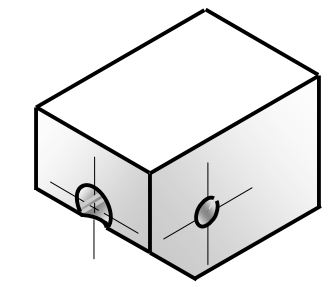
Cut A A



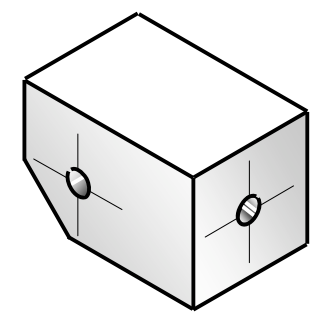
DETAILED DRAWING OF LINKING BLOCK



LONGITUDINAL CUT

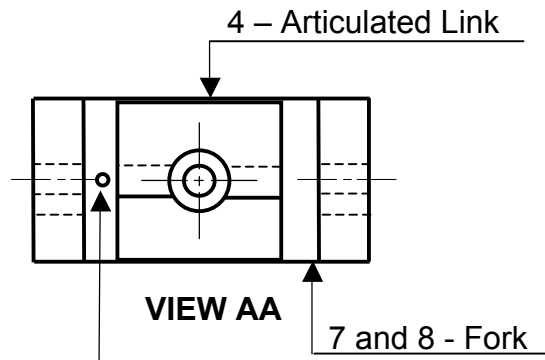


ISOMETRIC VIEW OF LEFT SIDE AND FACE



ISOMETRIC VIEW OF FACE AND RIGHT SIDE

TITLE ARTICULATED ARM		NO 4		LOC	No.	DESIGNATION	MATERIALS	OBSERVATION
GENERAL TOLERANCE ±1mm				1	1	LINKING BLOCK	Square pine rod	27 X 27 X 40
DATE	SCALE 1 = 1							



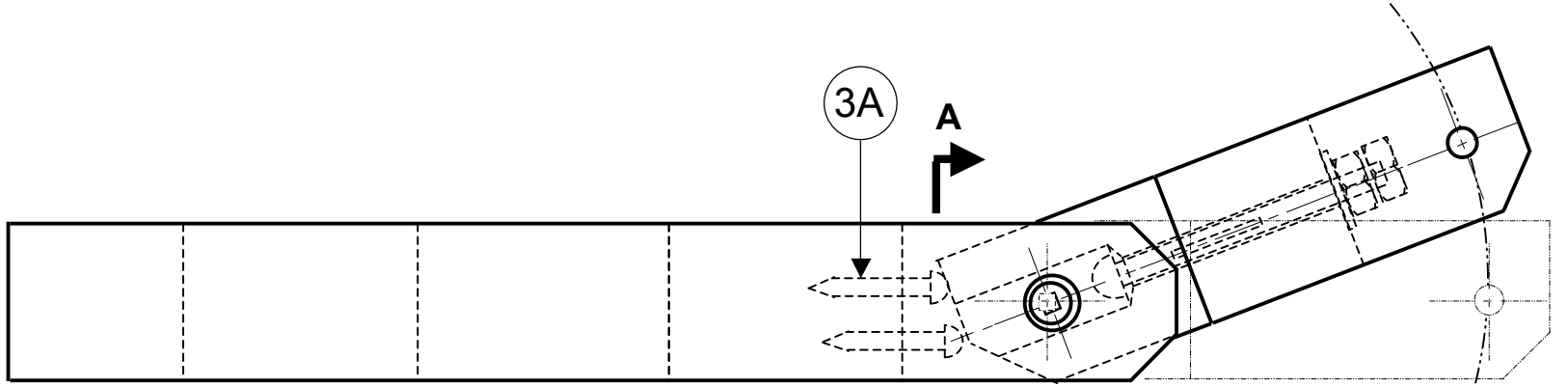
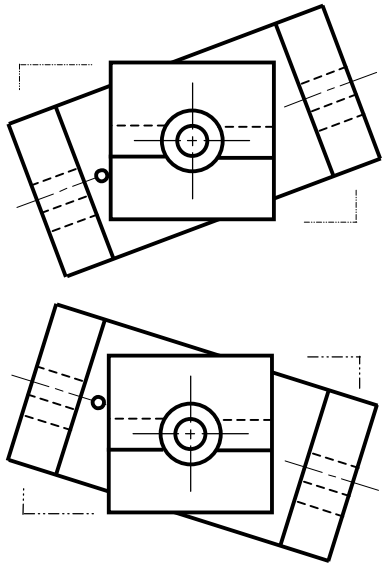
6 - Fork butt

VIEW AA

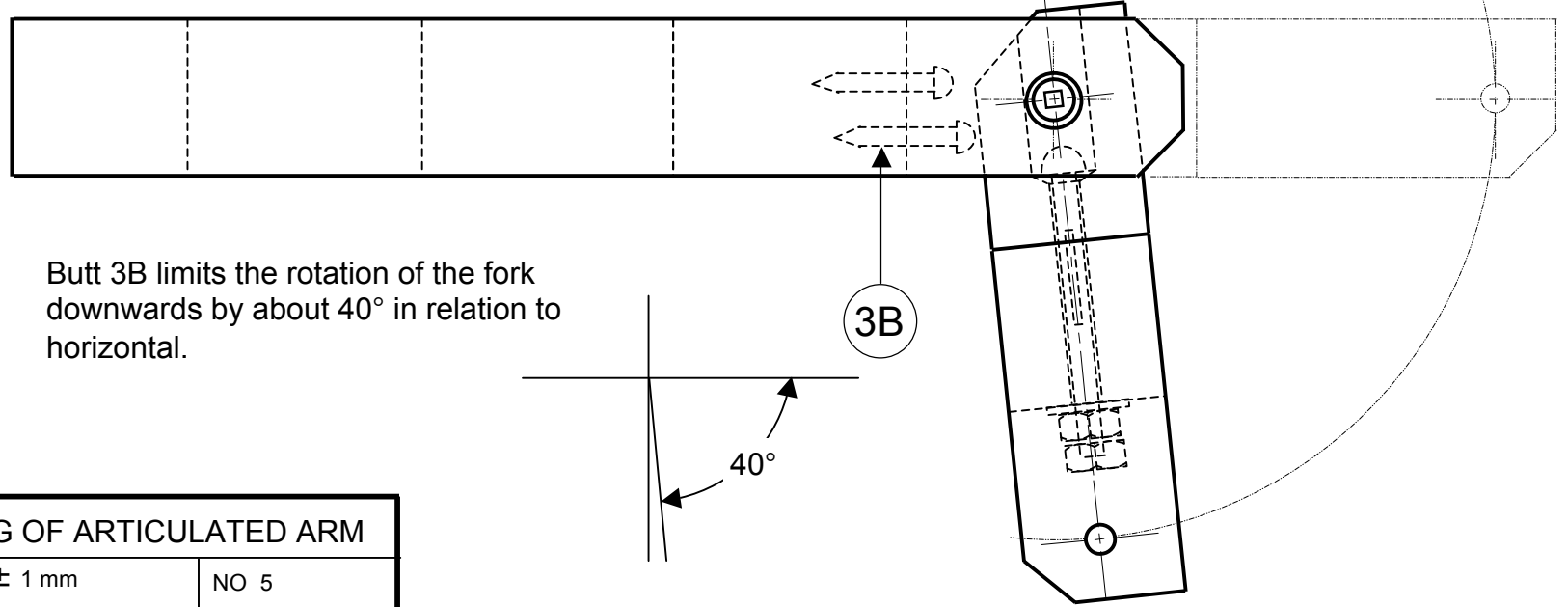
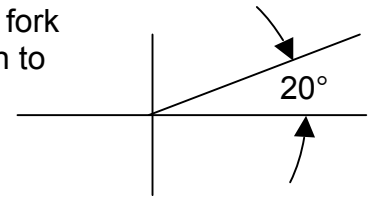
7 and 8 - Fork

4 - Articulated Link

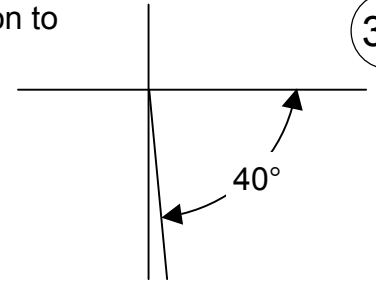
The fork butt (6) limits the rotation of the fork towards the left or right to about 18°.



Butt 3A limits the rotation of the fork upwards by about 20° in relation to horizontal.

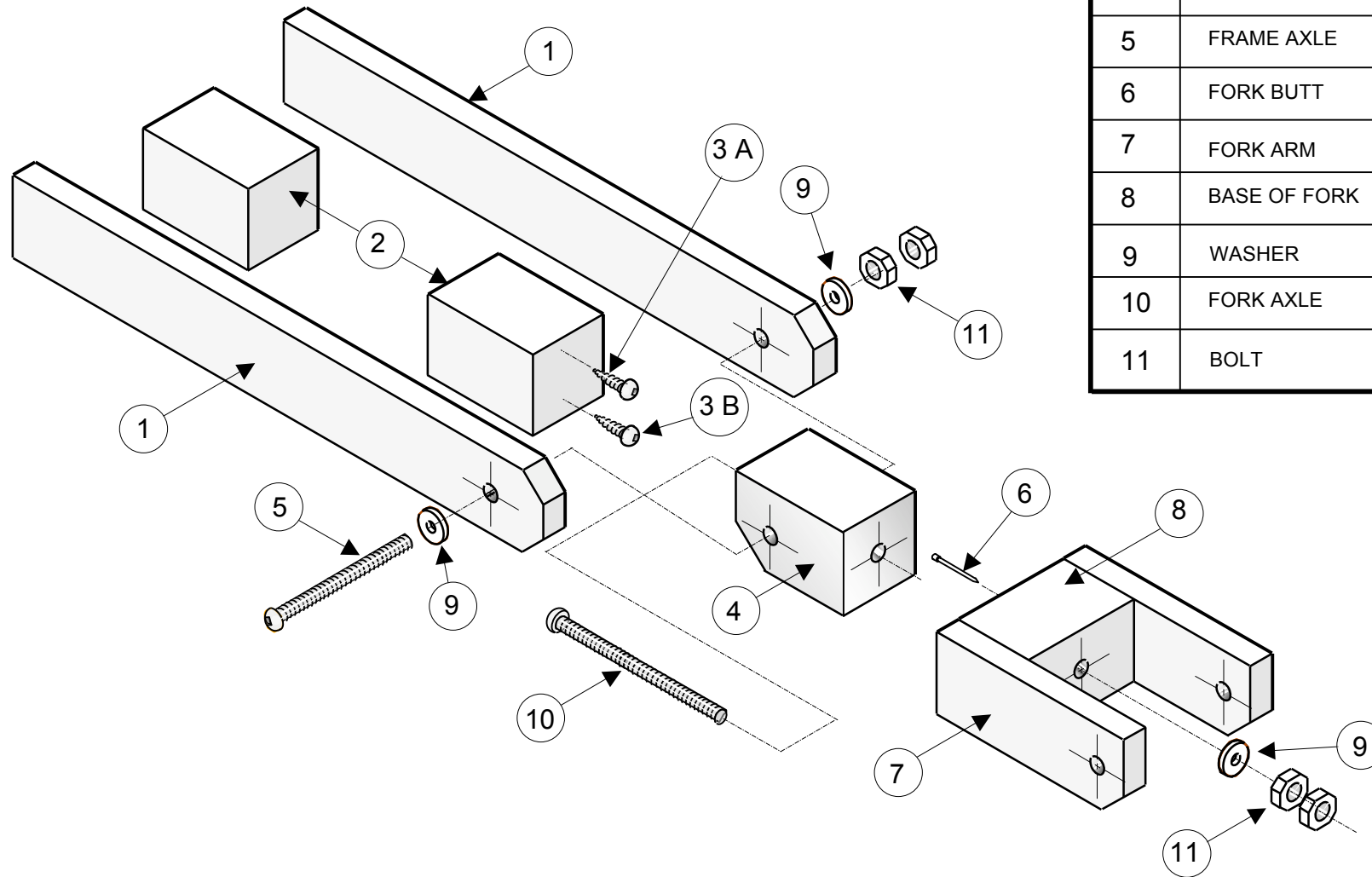


Butt 3B limits the rotation of the fork downwards by about 40° in relation to horizontal.



TITLE		OVERALL DRAWING OF ARTICULATED ARM	
GENERAL TOLERANCE		$\pm 1 \text{ mm}$	NO 5
DATE		SCALE	

DOCUMENT FOR TEACHER ONLY



NOMENCLATURE

LOC	DESIGNATION	No.	OBSERVATIONS
1	FRAME BEAM	2	Pine slat 27 x 8 x 200
2	CROSSBAR	2	Square pine rod 27 x 27 x 40
3	FRAME BUTT	2	Wood screw n° 6 x 3/4
4	LINKING BLOCK	1	Square pine rod 27 x 27 x 40
5	FRAME AXLE	1	Screw n° 8 x 32 x 50 mm (2")
6	FORK BUTT	1	Finishing nail 20 mm
7	FORK ARM	2	Pine rod 27 x 27 x 60
8	BASE OF FORK	1	Pine slat 27 x 27 x 40
9	WASHER	3	Washer no° 8
10	FORK AXLE	1	Screw no 8 x 32 x 50 (2 inches)
11	BOLT	4	Nut n° 8