

REF.	QTY	DESIGNATION	MATERIAL	OBSERVATIONS
4	1	Bottom protector	Pine board 4,5 x 9/16 in.	250 x 38 x 15
3	1	Stop	Molding 5/8 x 5/8 in.	250 x 17 x 17
2	2	Side panels	Molding de 1,5 x 5/8 in.	250 x 38 x 17
1	1	Bottom	Pine board 4,5 x 9/16 in.	250 x 75 x 15



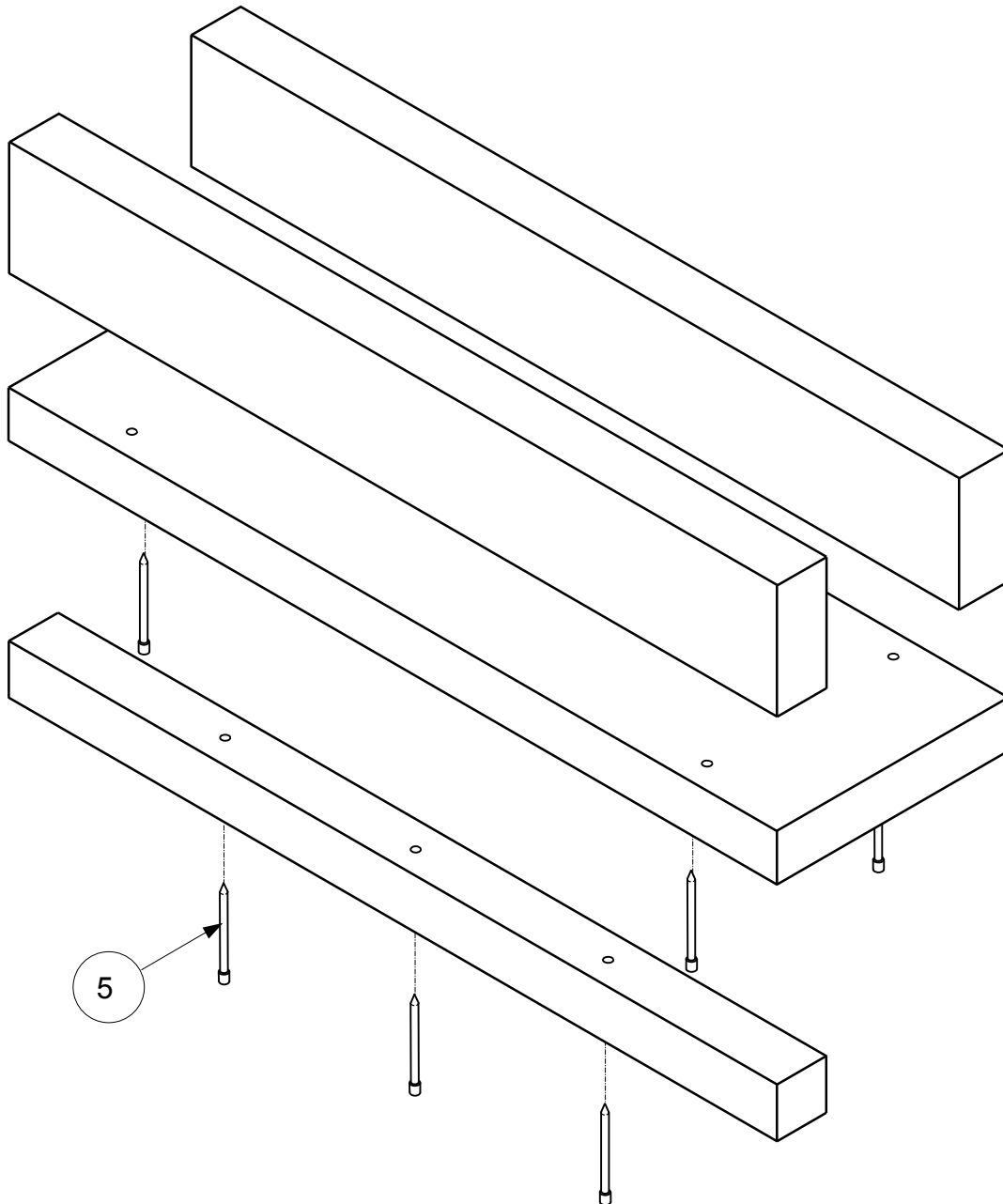
ACTIVITY : Miter Box

TITLE : Nomenclature of the Miter Box

DATE : April 29th 2013

SCALE : 1 = 2

DRAWING :



REF.	QTY	DESIGNATION	MATERIALS	OBSERVATIONS
5	10	Nail	Finishing Nail 1 in.	



ACTIVITY : Miter Box

TITLE : Exploded View of the Miter Box

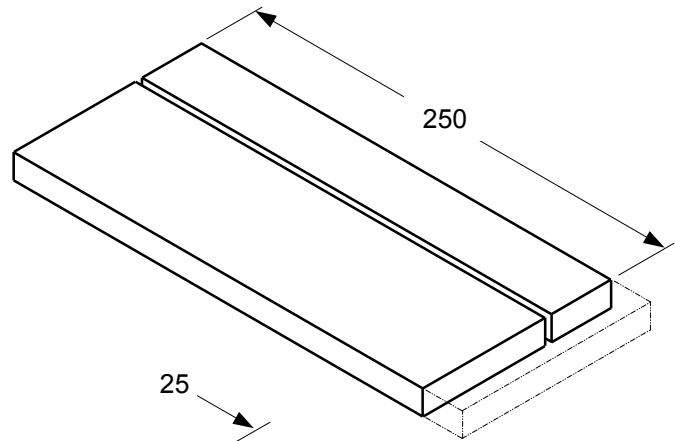
DATE : April 29th 2013

SCALE : 1= 2

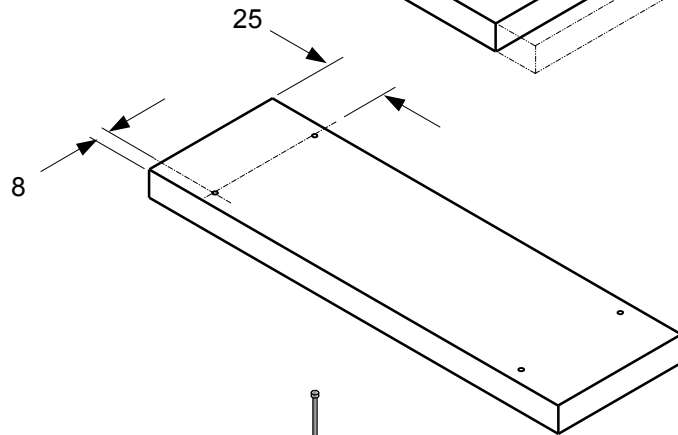
DRAWING :

STEP BY STEP ASSEMBLY OF THE MITER BOX

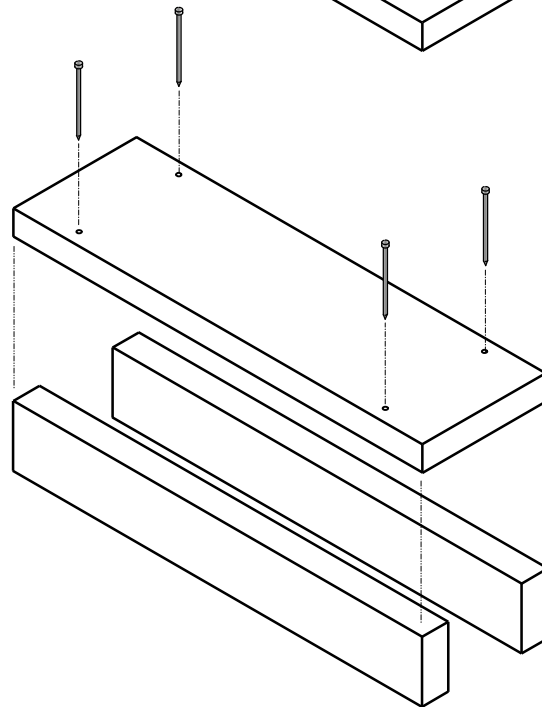
According to the technical file, cut the bottom and the bottom protector of the miter box in a 4,5 X 9/16 in. pine board.



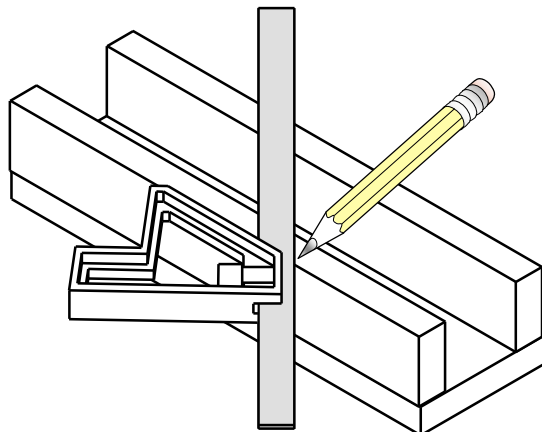
Mark the location of the nails on the bottom and drill guiding holes using a 1/16 in. drill.



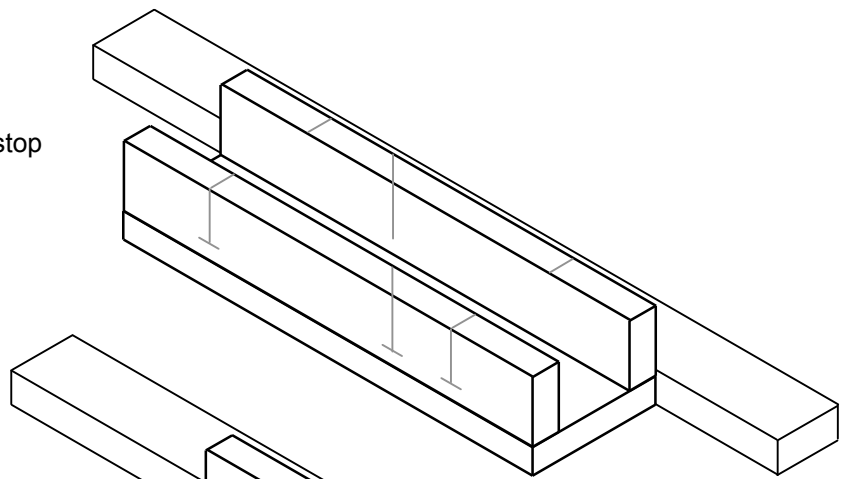
According to the technical file, cut the side panels out of a 1,5 x 5/8 in. molding. Glue and nail down to the bottom using 1 in. finishing nails.



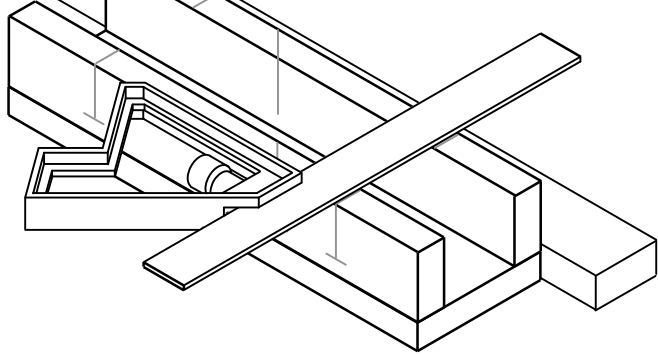
According to the specifications in the technical file, measure and mark the location of the sawing gap.



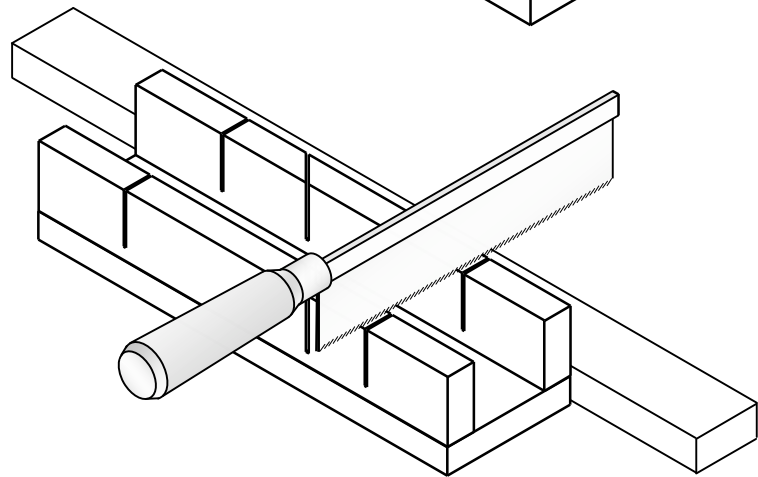
Block the miter box to the worktop using a stop and clamps.



Initiate the sawing of the slot guiding the saw with the square.



Continue the sawing of the slot using the miter saw or a finishing saw.



Glue and nail down the stop underneath the miter box.

