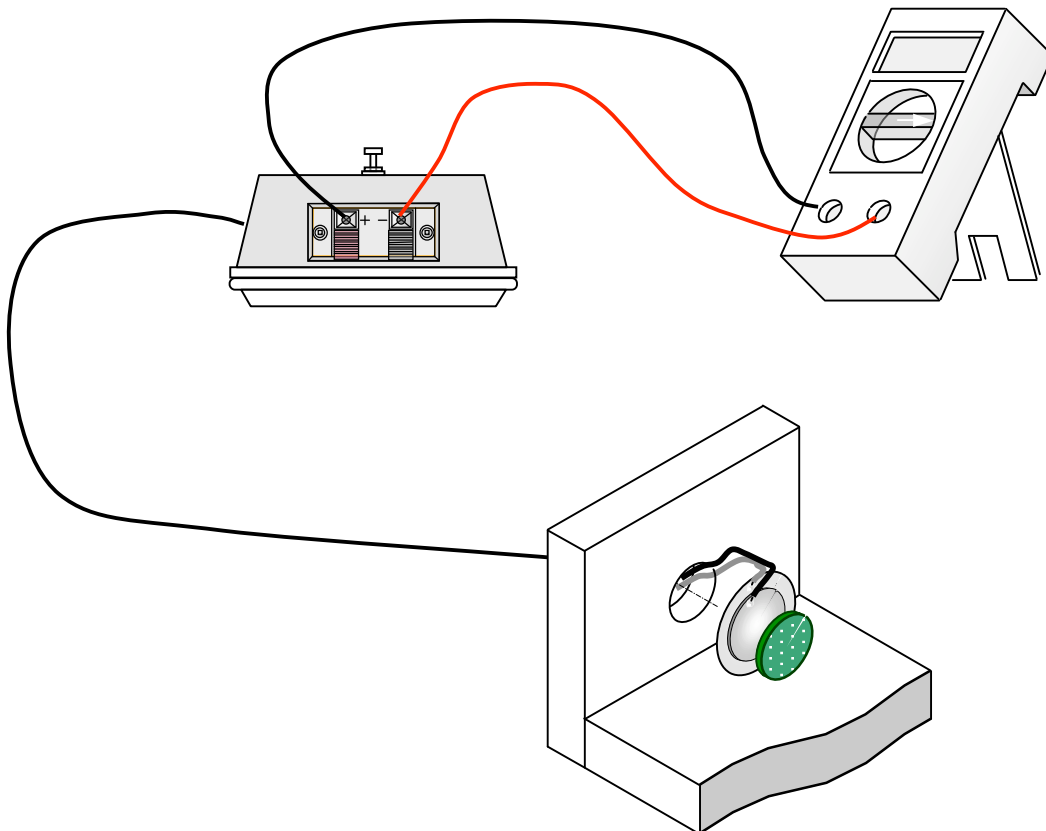




TECHNICAL FILE FOR THE TRANSDUCER CONTROL BOX

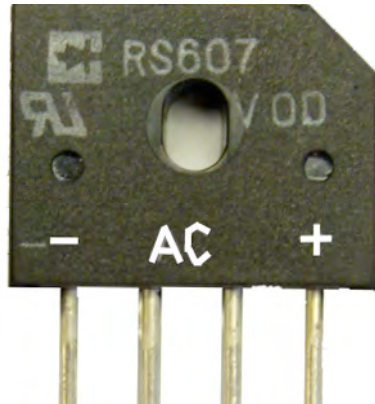
This technical file is
intended for the teaching
or technical personnel.



AEOLUS' CHARIOT (Simplified LES)

January 2012

COMPONENTS OF THE CONTROL BOX



The morphology or the model of the diode bridge are not important. It may be much smaller.

Diode bridge (4 diodes)

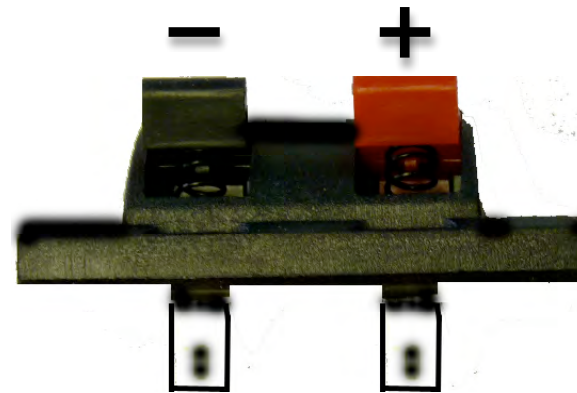


The morphology and the voltage of the capacitor are not important. Its capacity, however, should be around 6 microfarads (μF).

Electrolytic capacitor

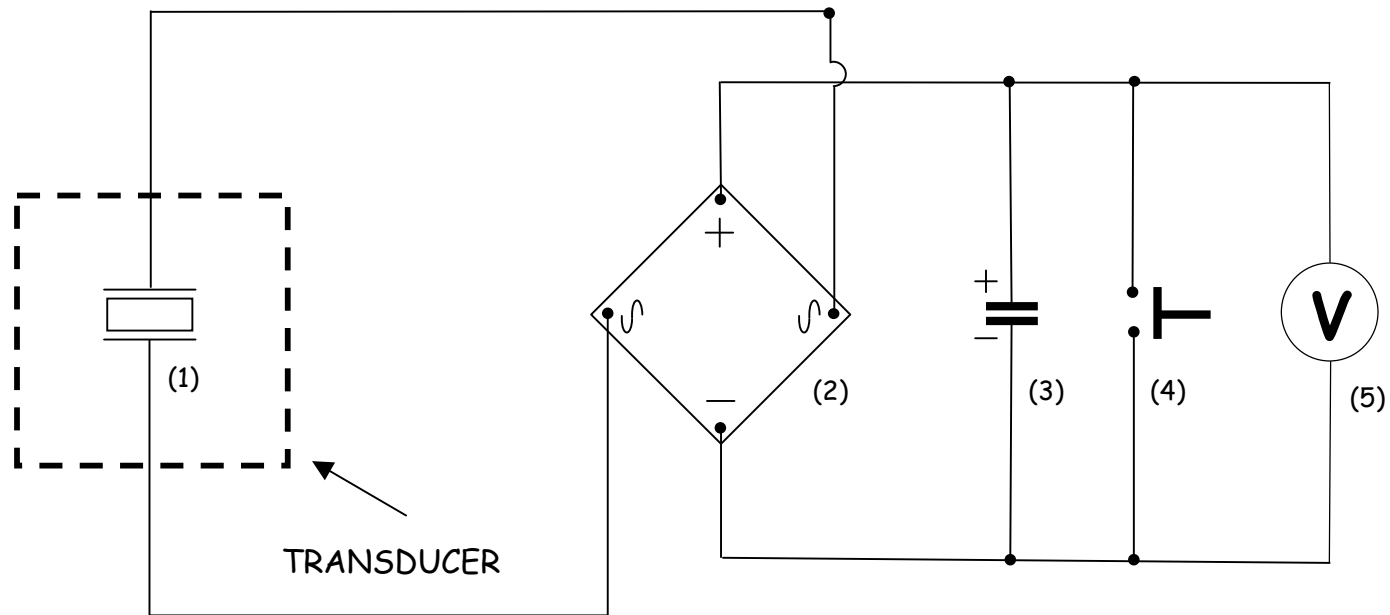


Push-button switch



Speaker terminal

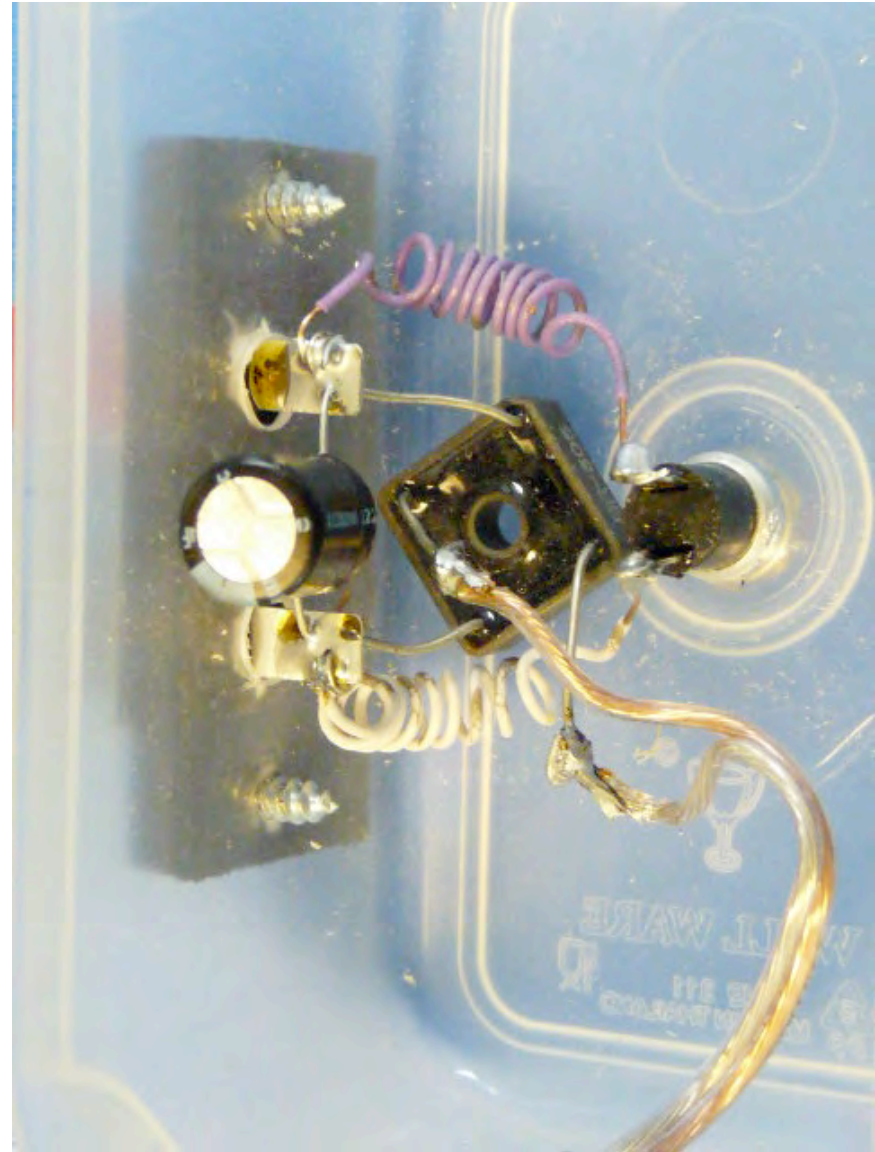
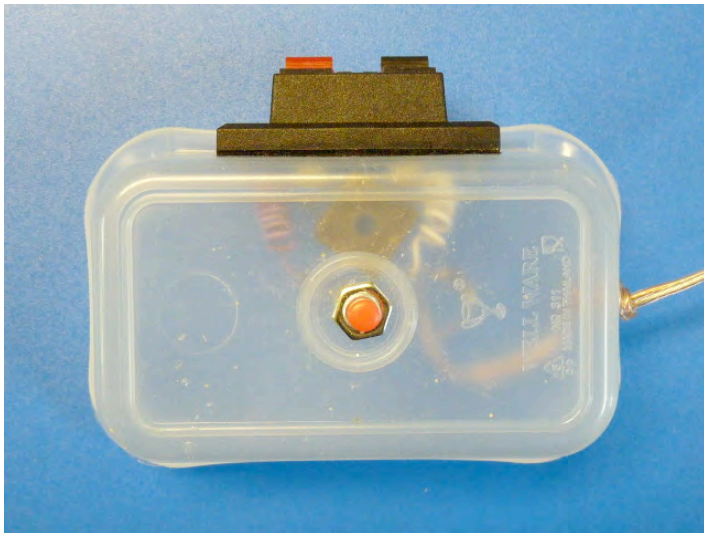
ASSEMBLY OF ELECTRICAL DIAGRAM



Legend

1. Piezoelectric crystal
2. Diode bridge
3. Electrolytic capacitor
4. Push button switch
5. Multimeter in continuous voltage mode

PHOTOS OF THE CONTROL BOX



SIMPLIFIED ILLUSTRATION OF THE CONNECTION

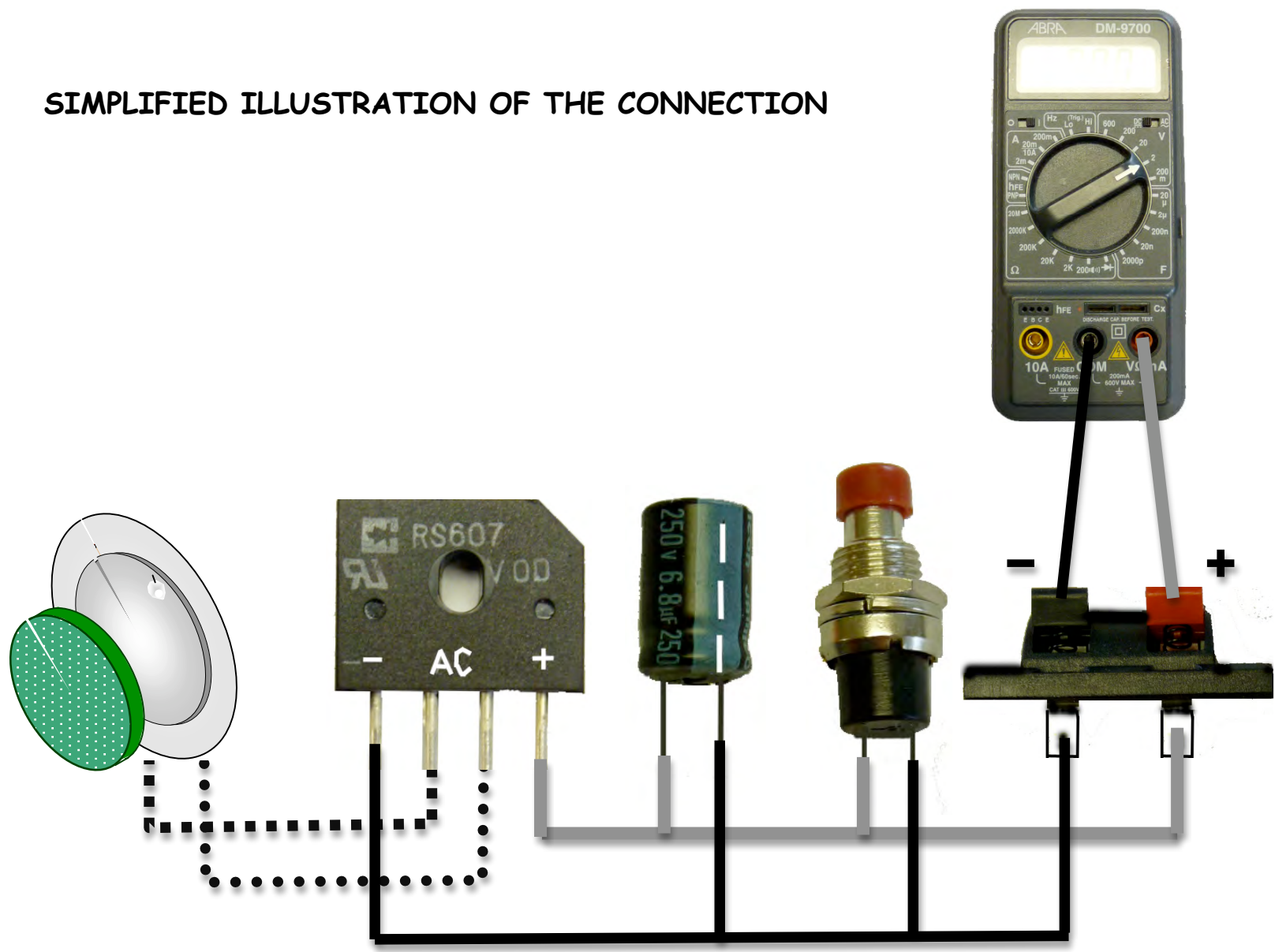


ILLUSTRATION OF THE CONNECTION AS SHOWN
ON PHOTOS ABOVE

